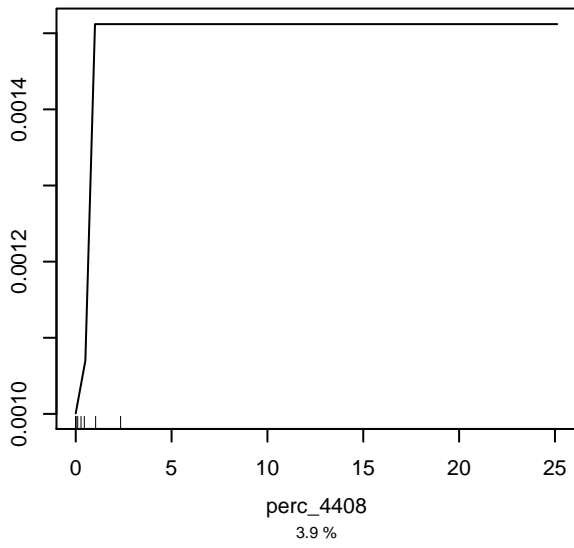
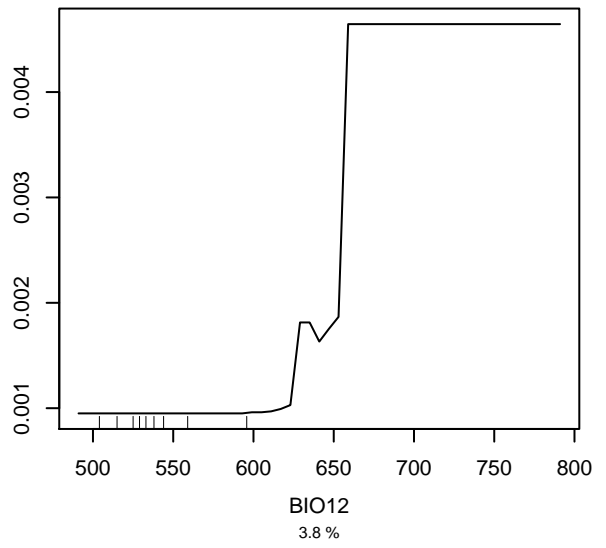


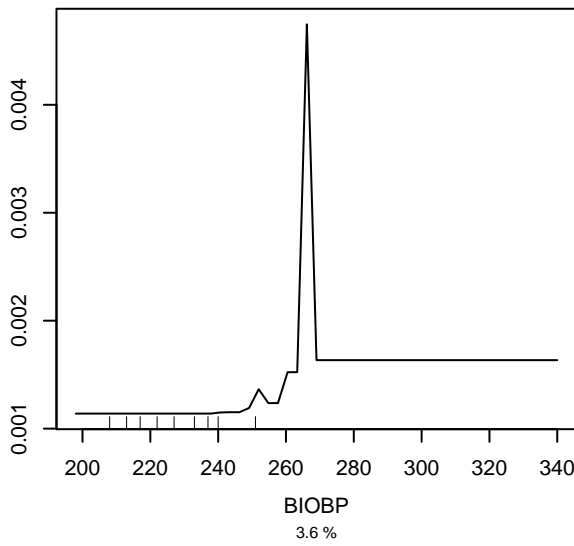
Partial dependence on perc\_4408



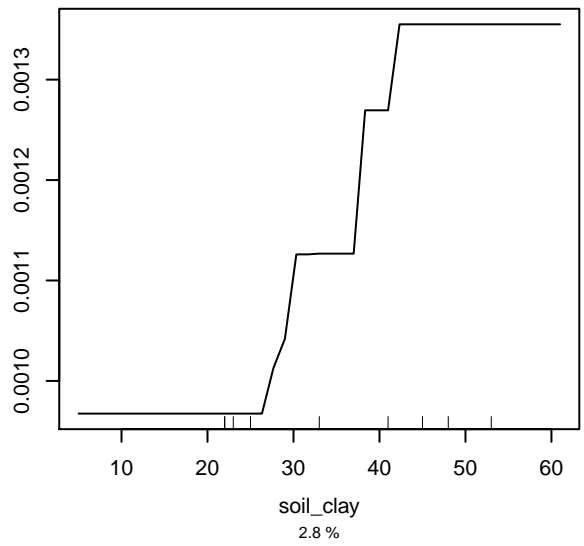
Partial dependence on BIO12



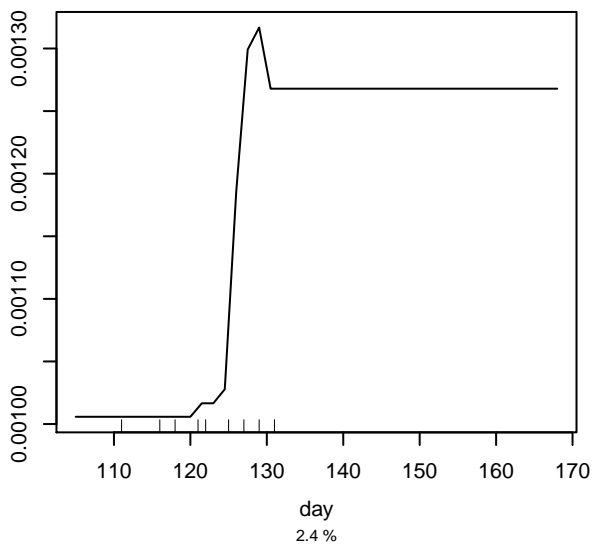
Partial dependence on BIOBP



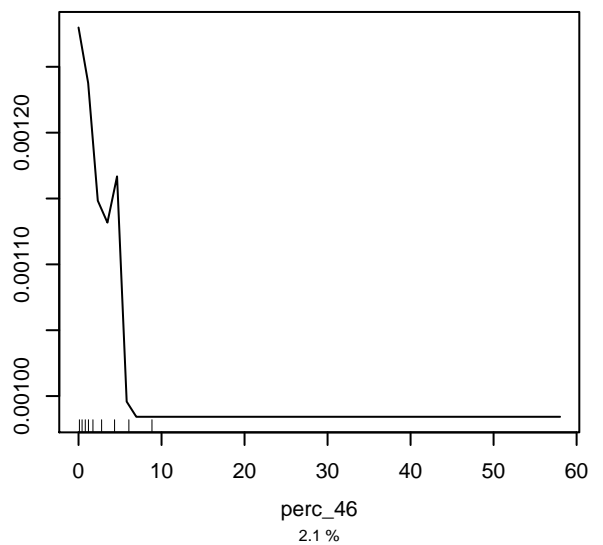
Partial dependence on soil\_clay



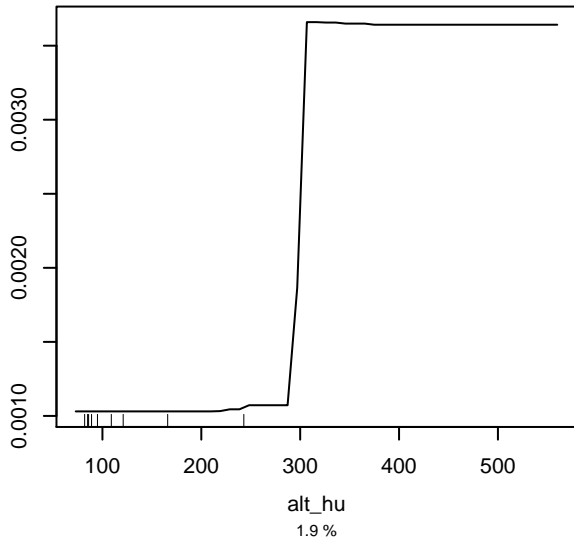
Partial dependence on day



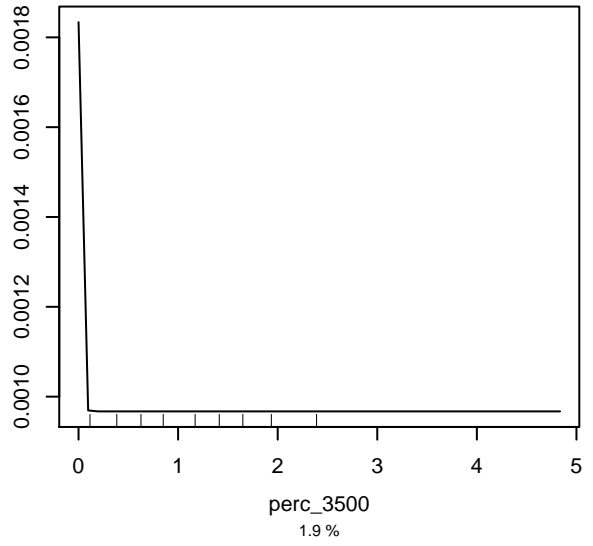
Partial dependence on perc\_46



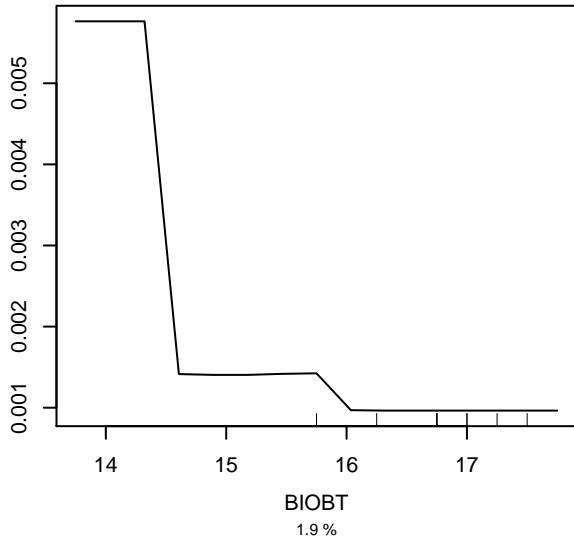
Partial dependence on alt\_hu



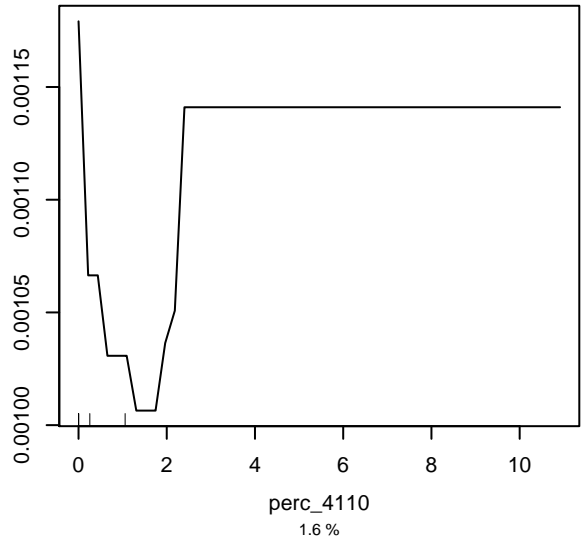
Partial dependence on perc\_3500



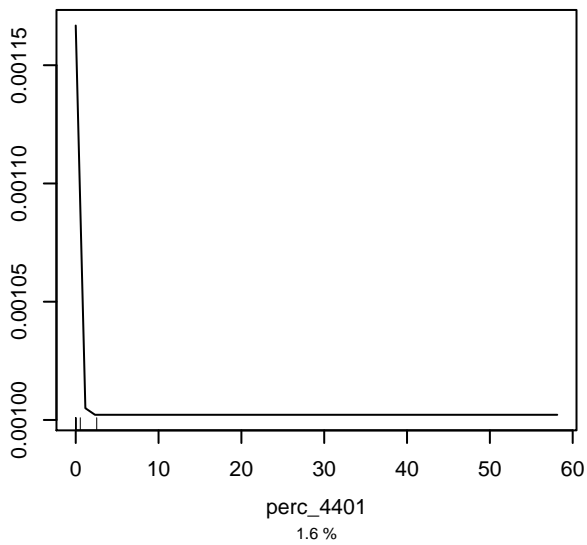
Partial dependence on BIOBT



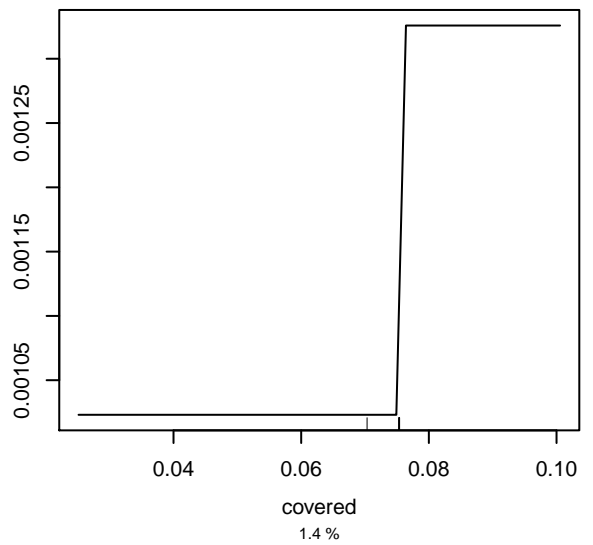
Partial dependence on perc\_4110

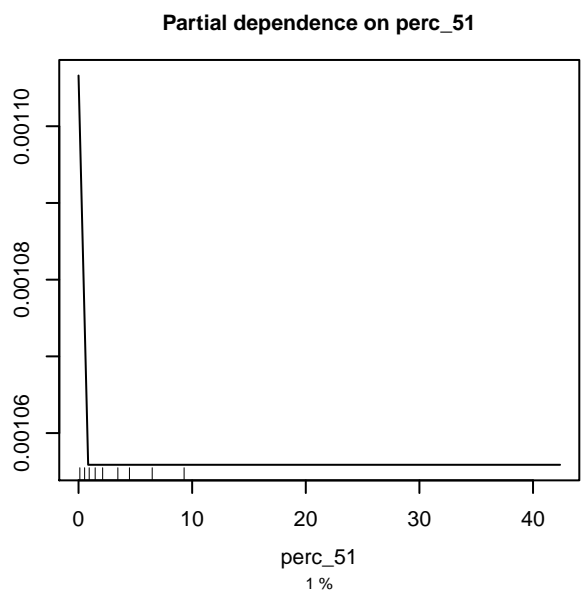
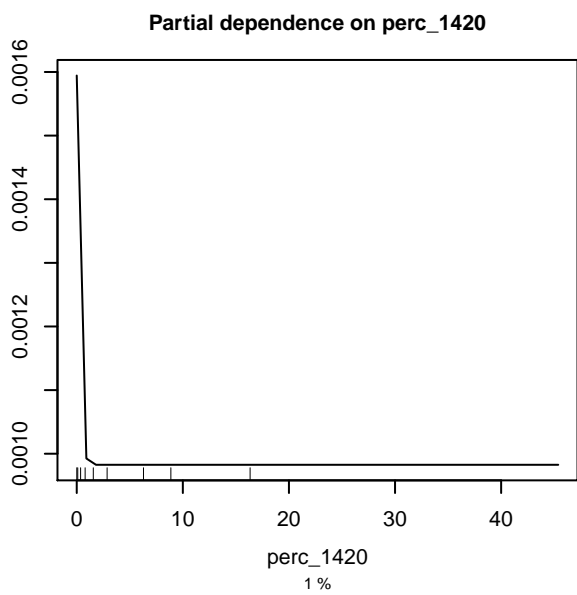
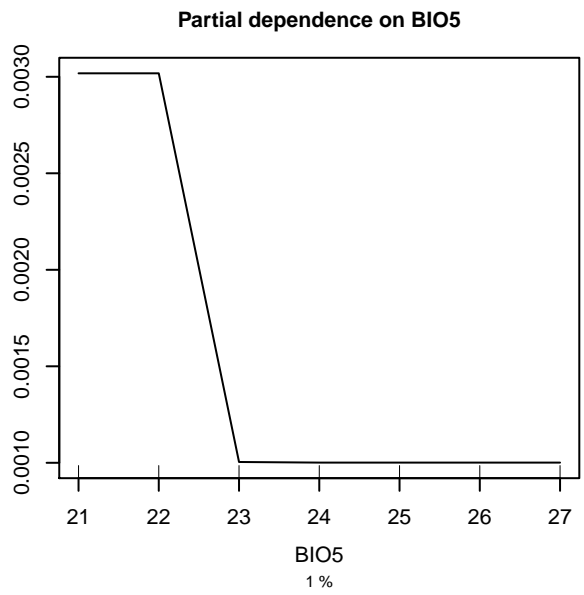
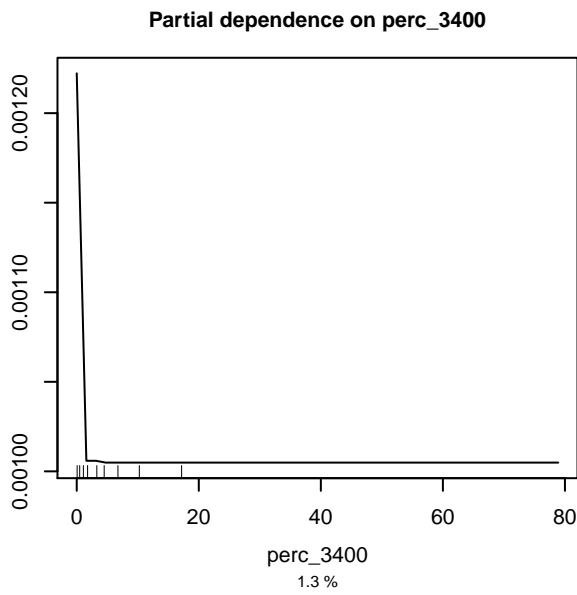
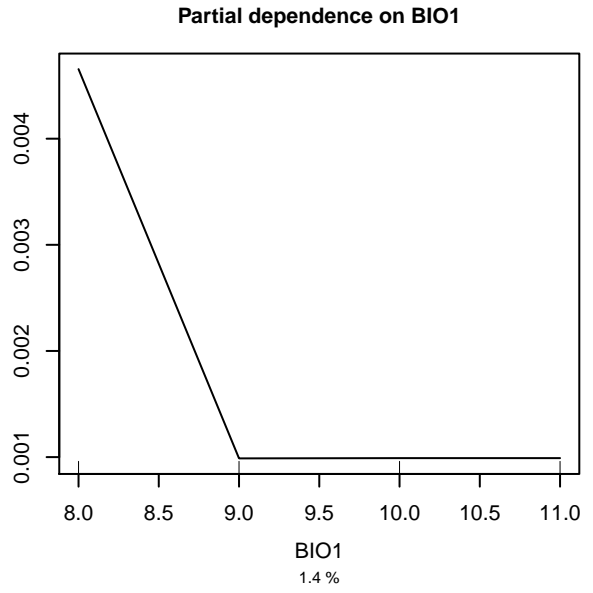
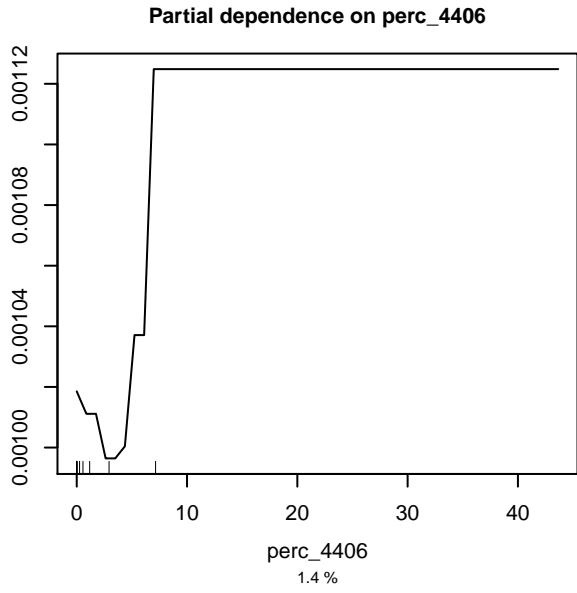


Partial dependence on perc\_4401

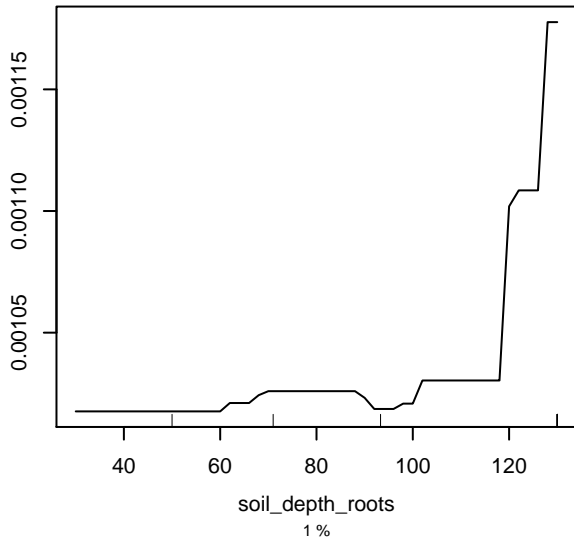


Partial dependence on covered

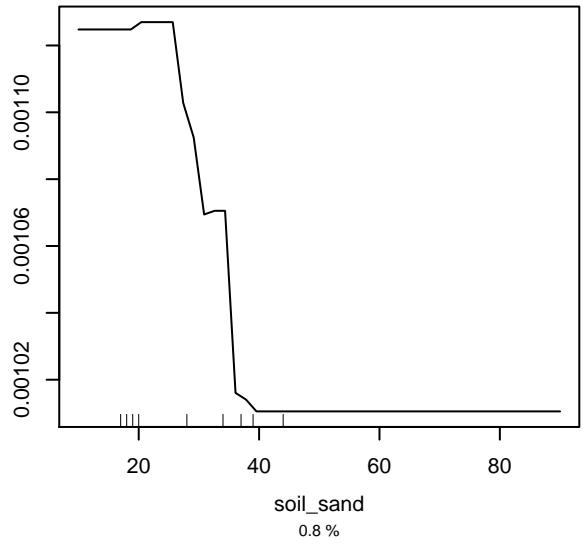




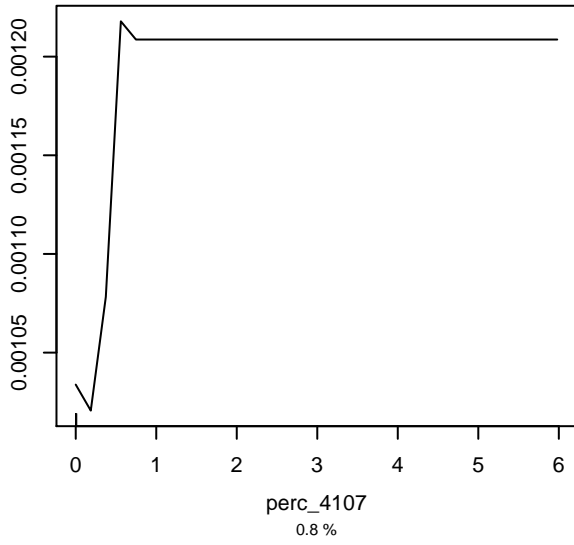
Partial dependence on soil\_depth\_roots



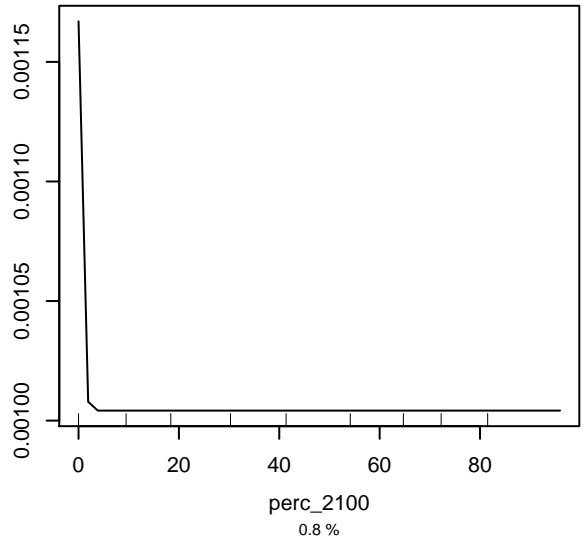
Partial dependence on soil\_sand



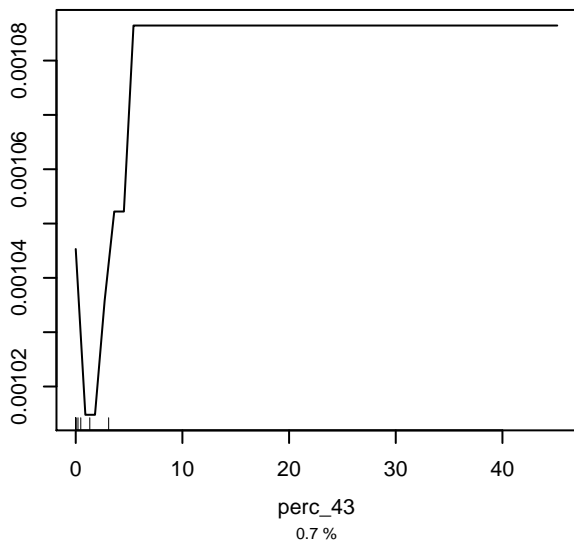
Partial dependence on perc\_4107



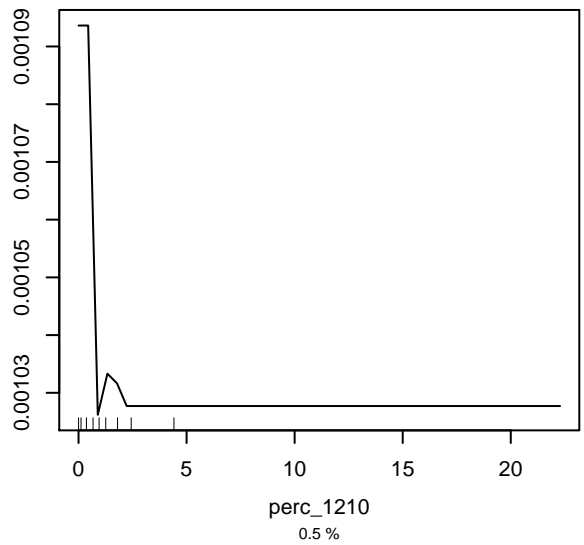
Partial dependence on perc\_2100



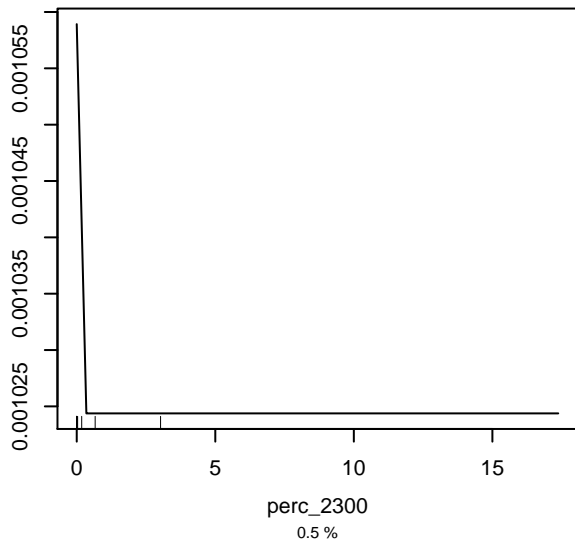
Partial dependence on perc\_43



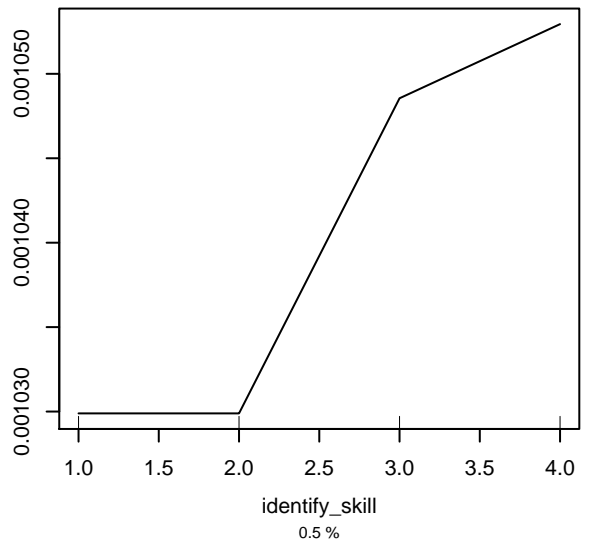
Partial dependence on perc\_1210



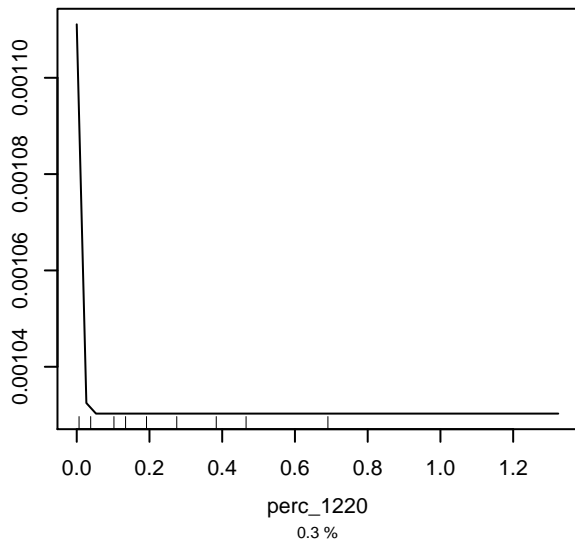
Partial dependence on perc\_2300



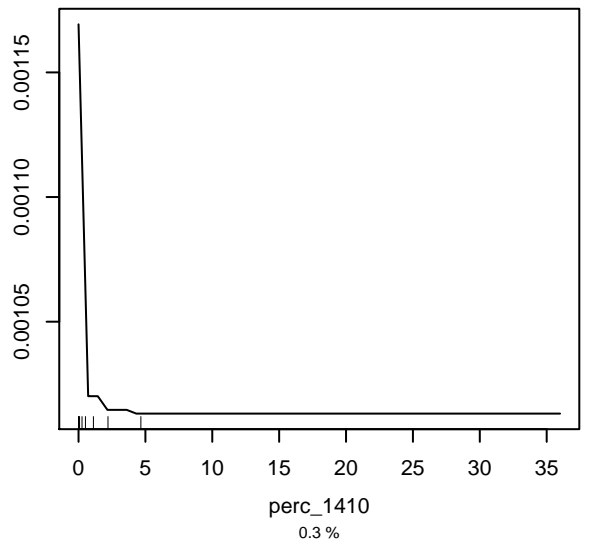
Partial dependence on identify\_skill



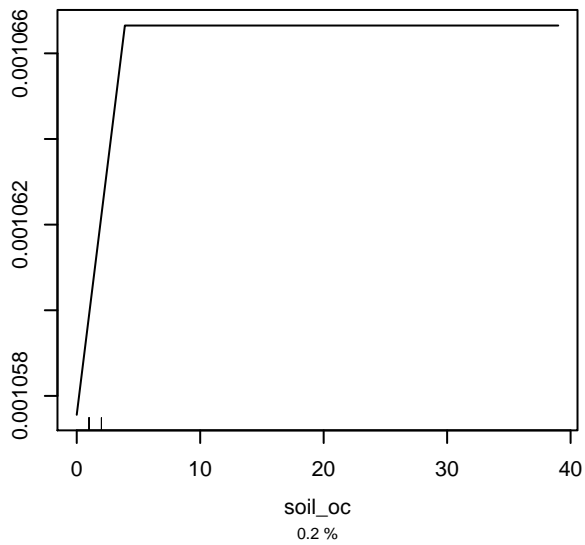
Partial dependence on perc\_1220



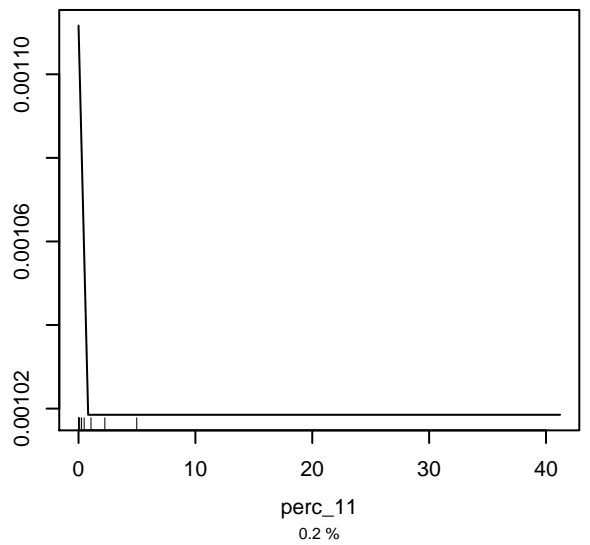
Partial dependence on perc\_1410

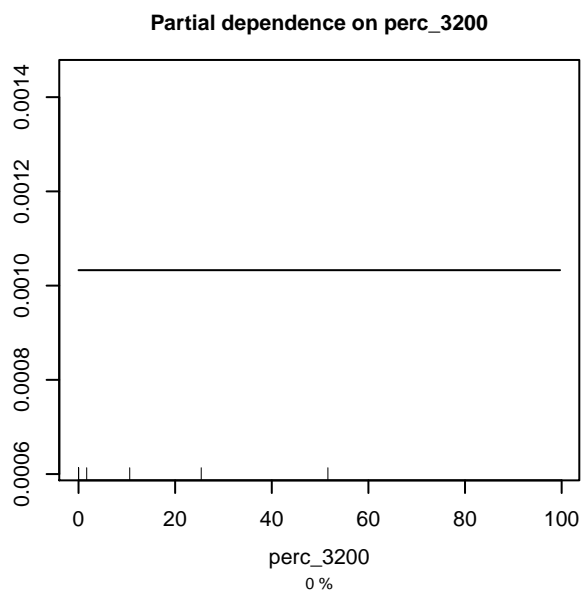
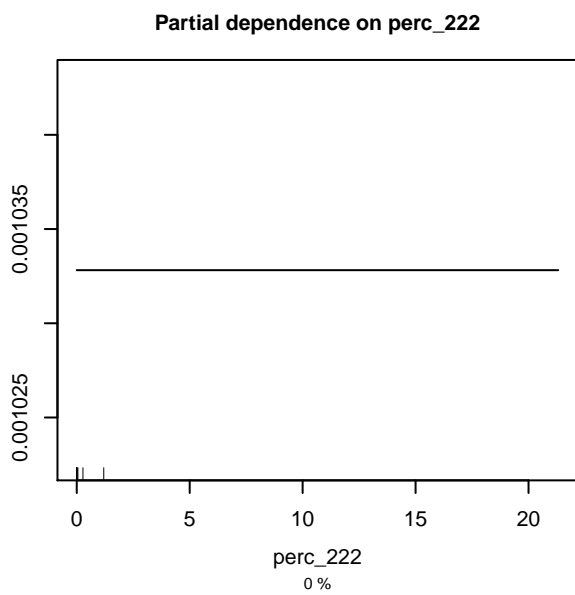
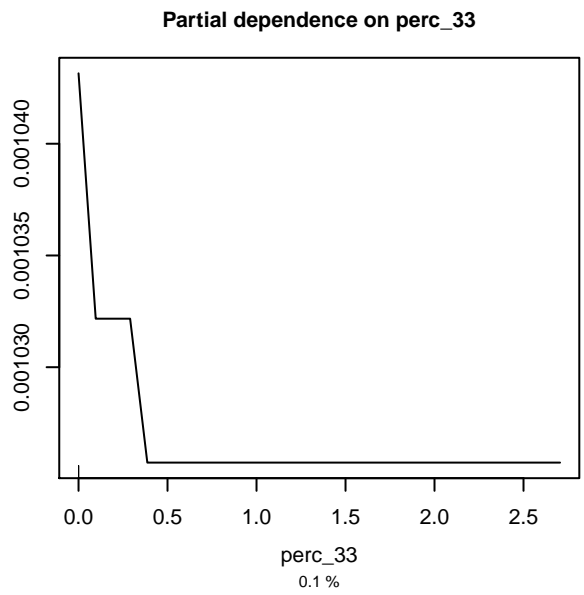
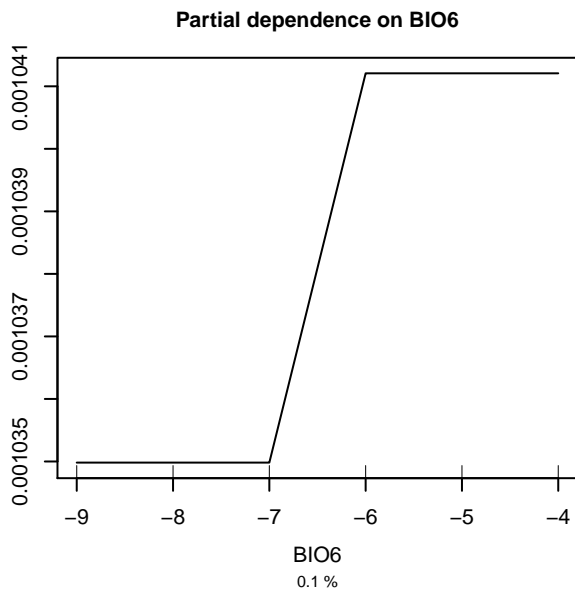
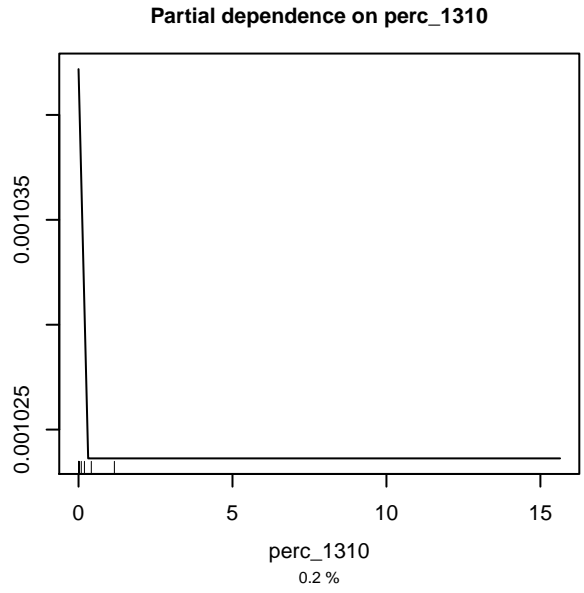
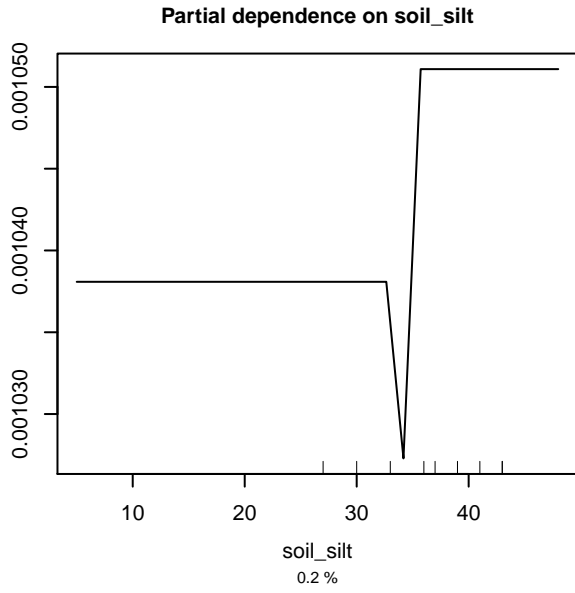


Partial dependence on soil\_oc

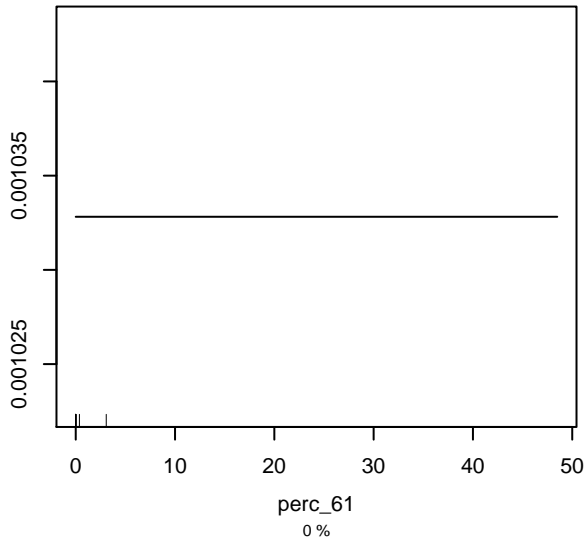


Partial dependence on perc\_11

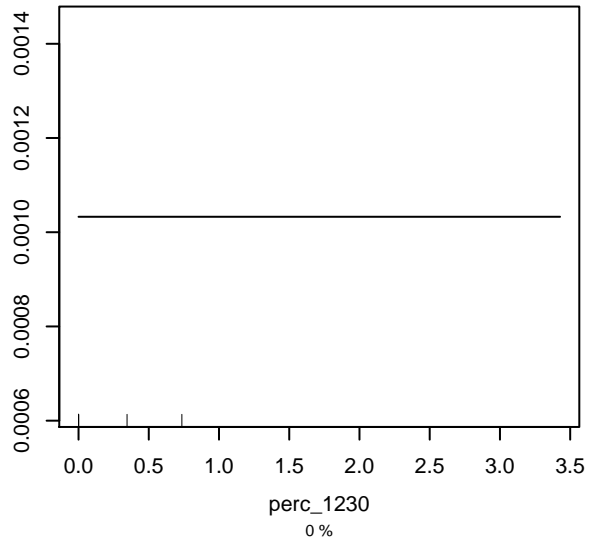




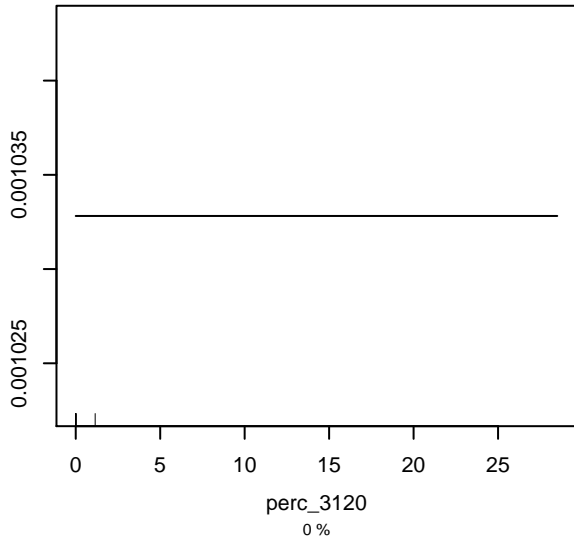
Partial dependence on perc\_61



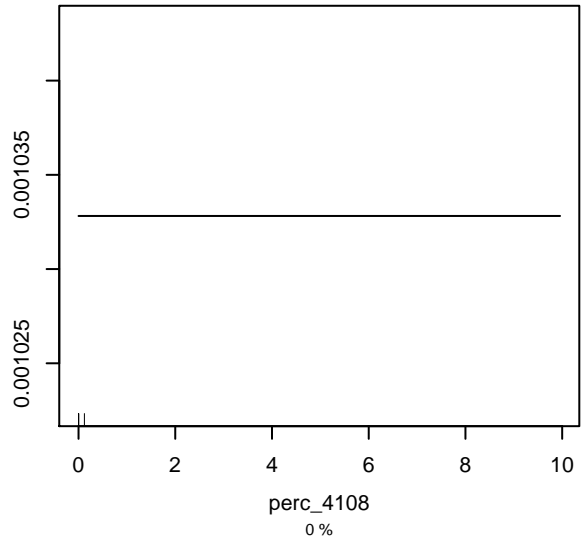
Partial dependence on perc\_1230



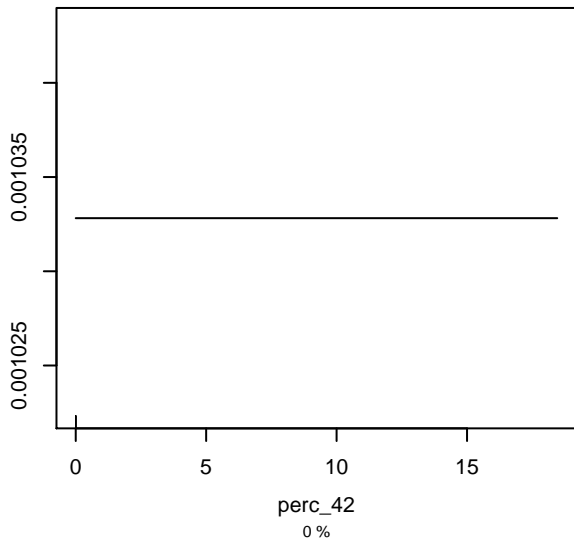
Partial dependence on perc\_3120



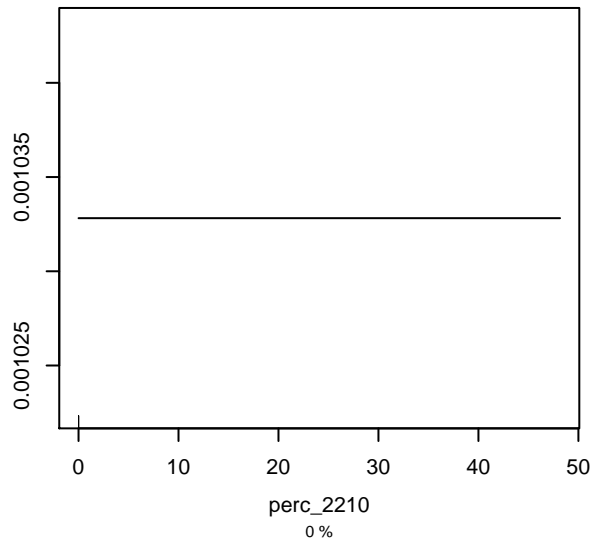
Partial dependence on perc\_4108



Partial dependence on perc\_42

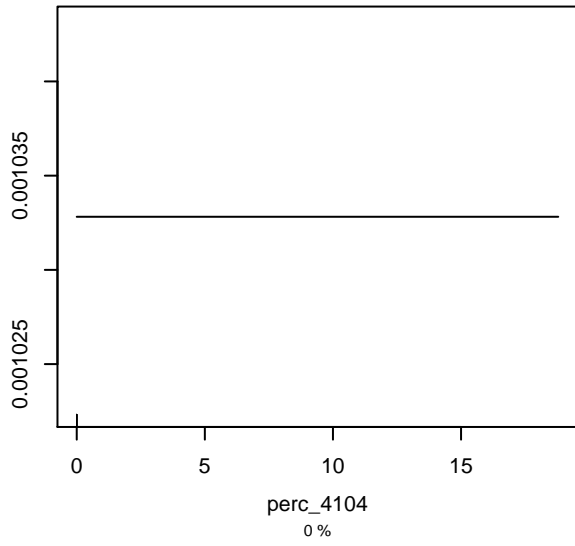


Partial dependence on perc\_2210

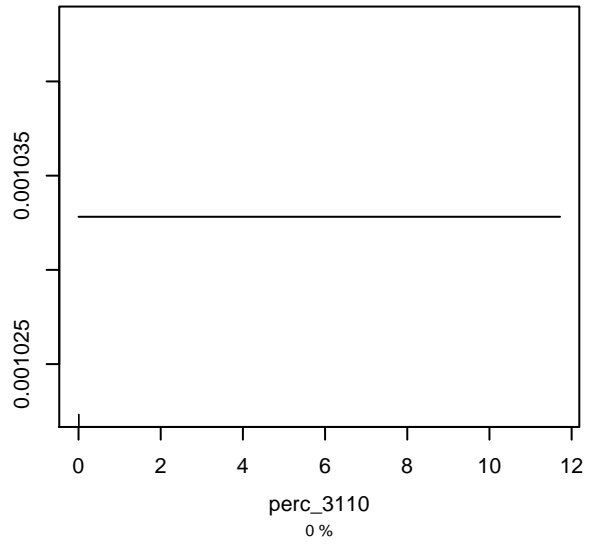




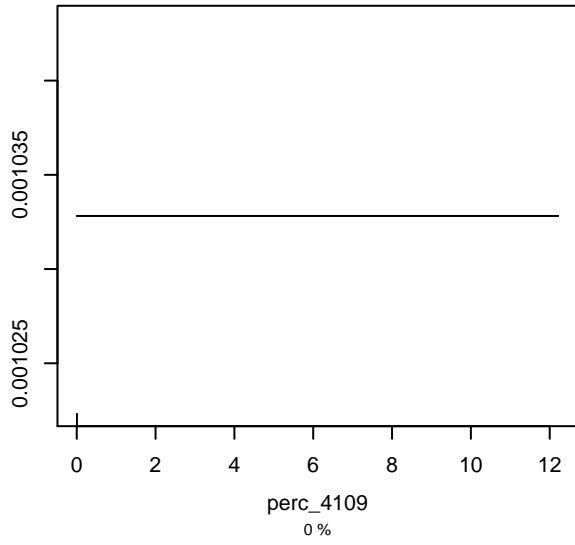
Partial dependence on perc\_4104



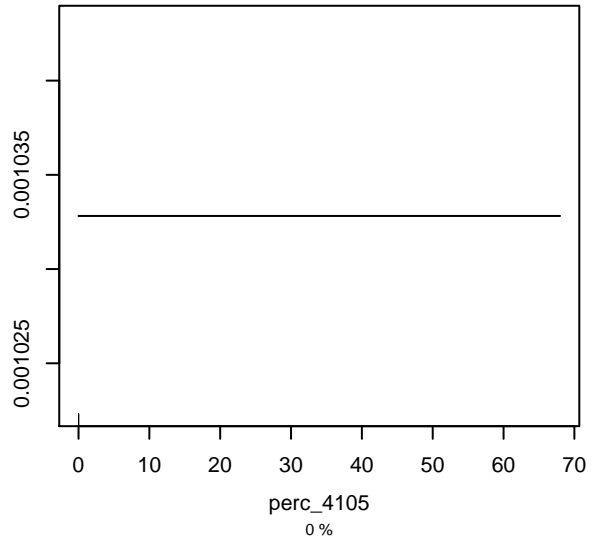
Partial dependence on perc\_3110



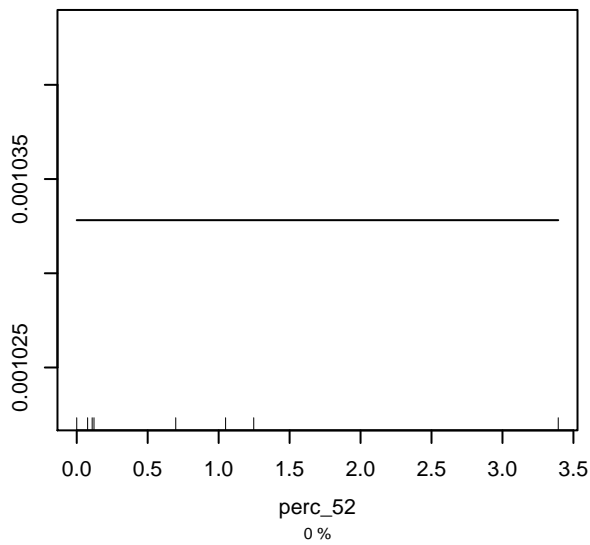
Partial dependence on perc\_4109



Partial dependence on perc\_4105



Partial dependence on perc\_52



Partial dependence on soil\_bd

