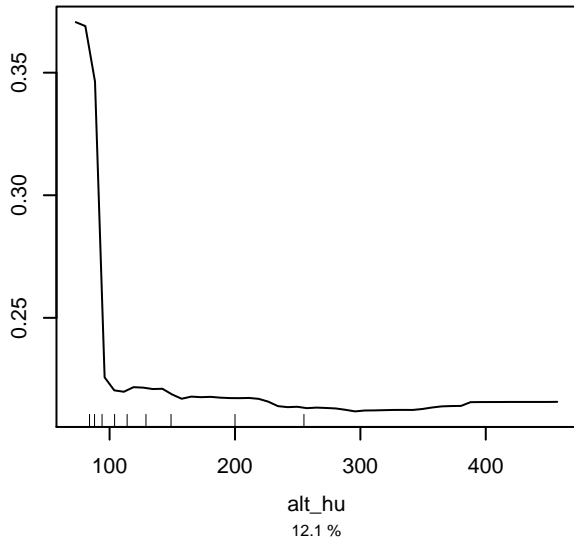
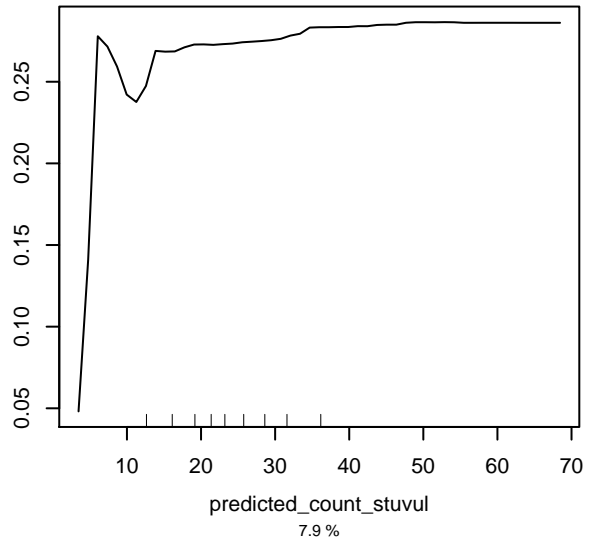


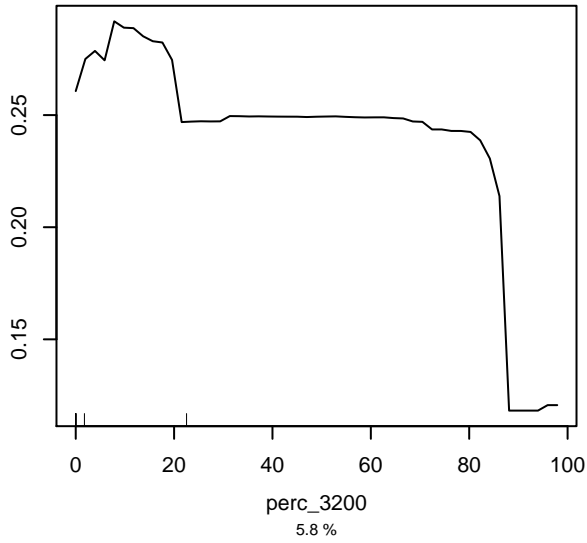
Partial dependence on alt_hu



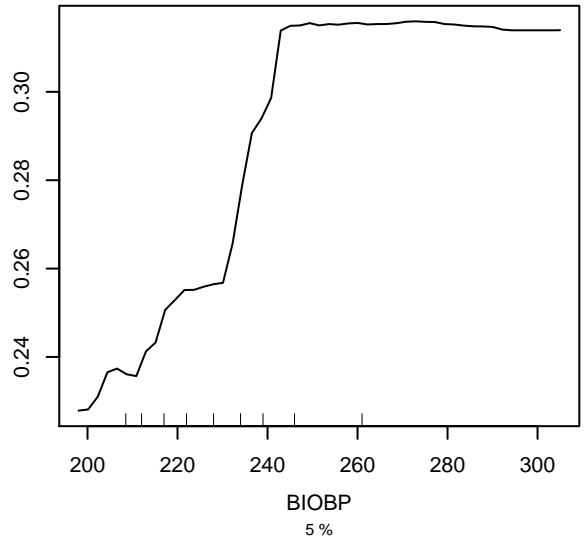
Partial dependence on predicted_count_stuvul



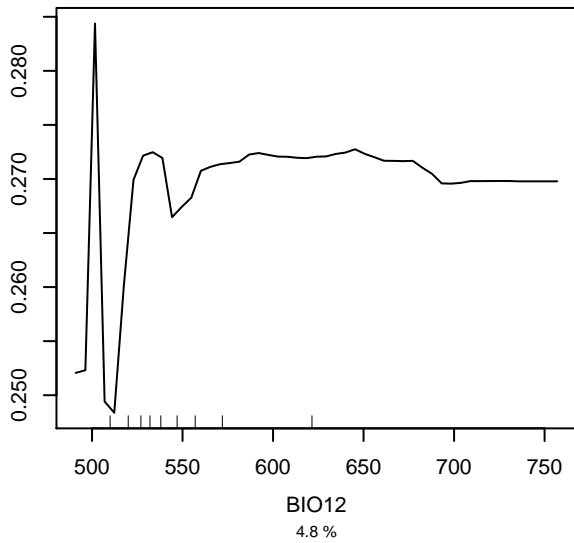
Partial dependence on perc_3200



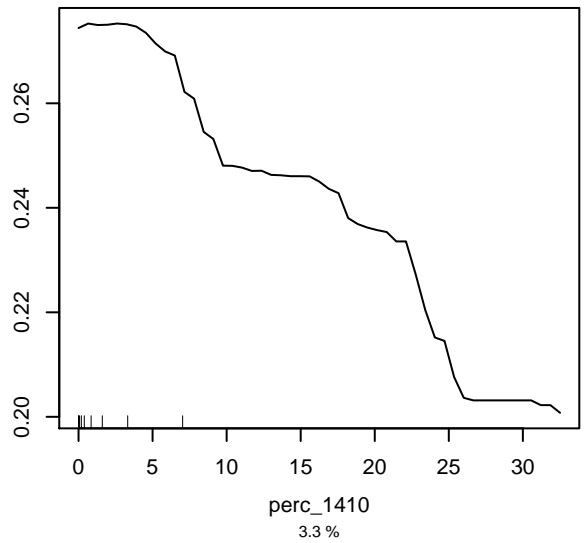
Partial dependence on BIOBP



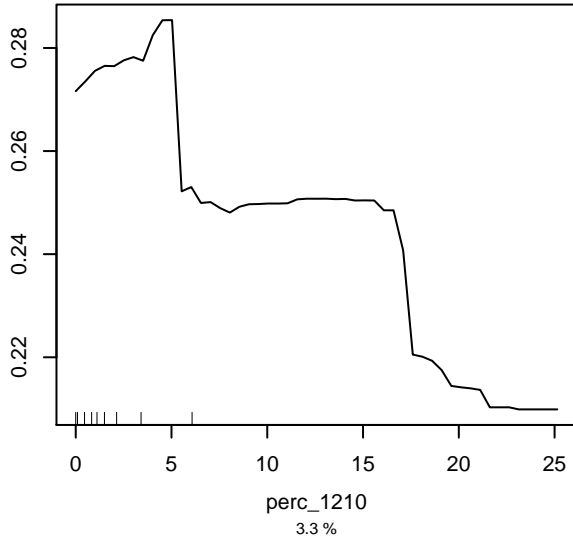
Partial dependence on BIO12



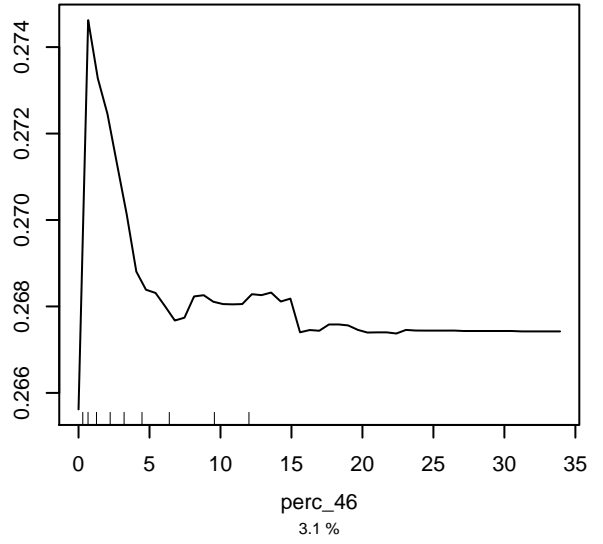
Partial dependence on perc_1410



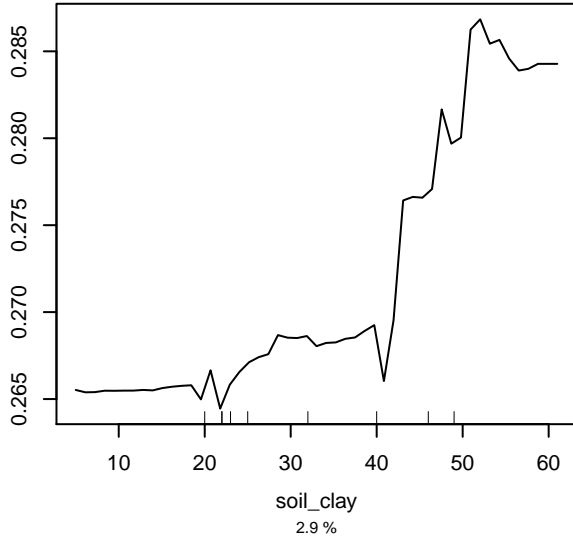
Partial dependence on perc_1210



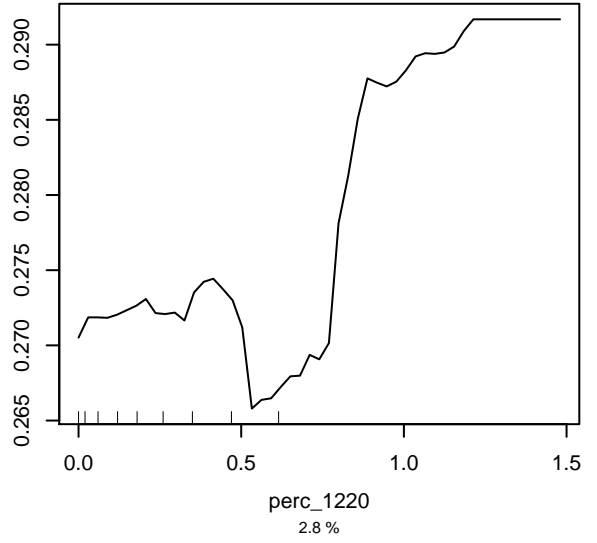
Partial dependence on perc_46



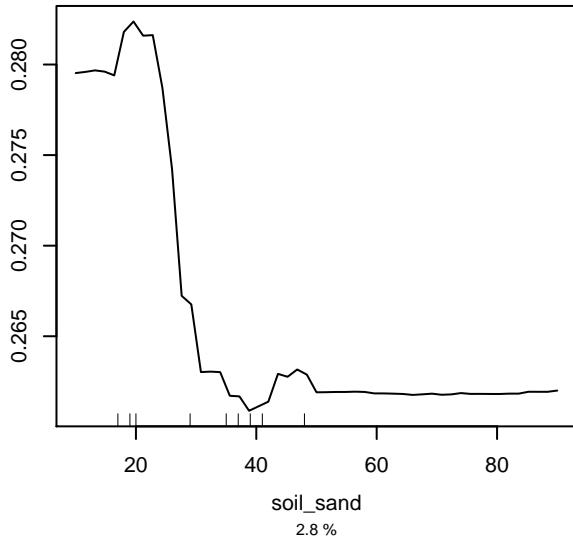
Partial dependence on soil_clay



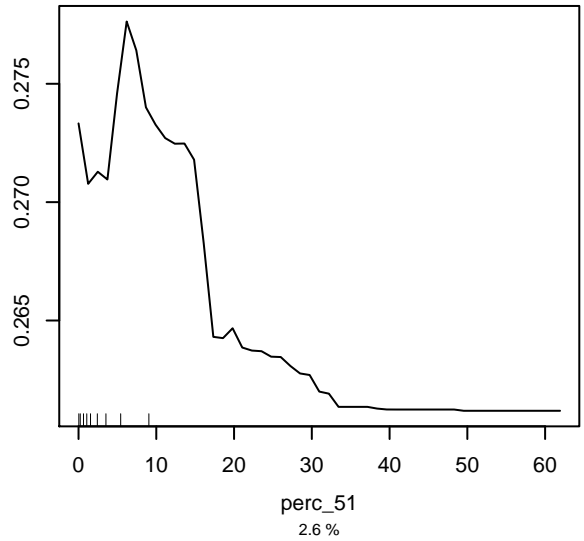
Partial dependence on perc_1220

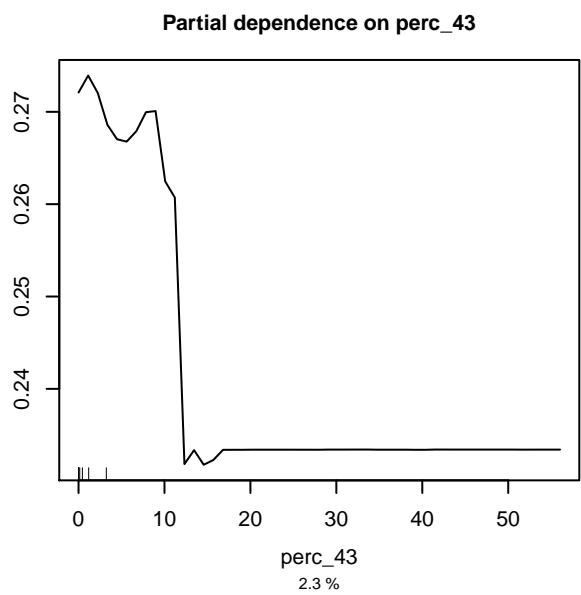
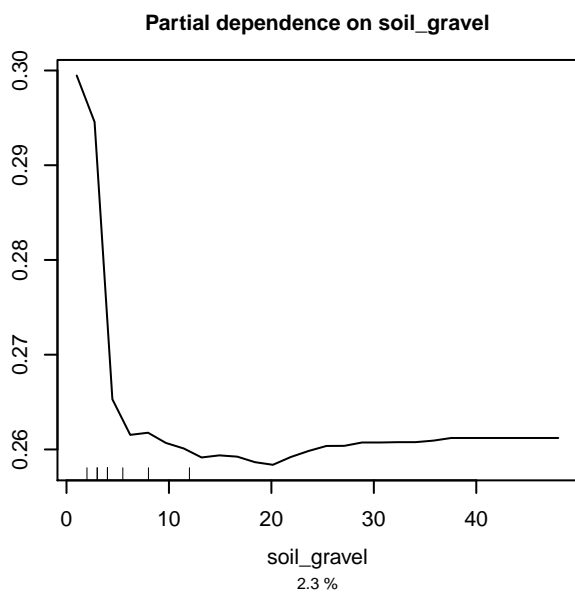
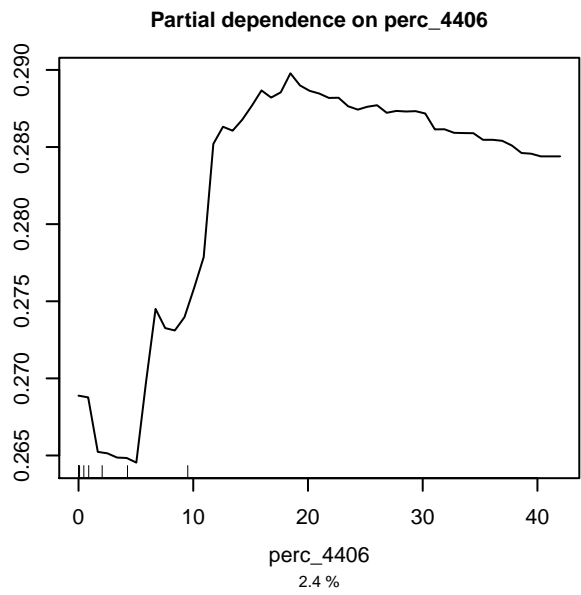
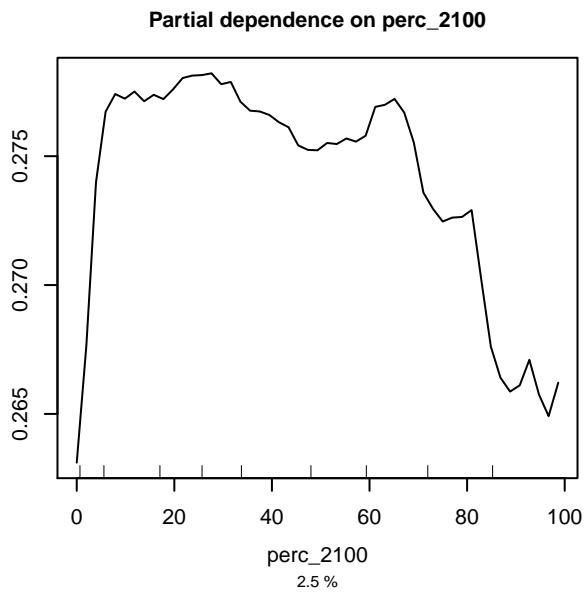
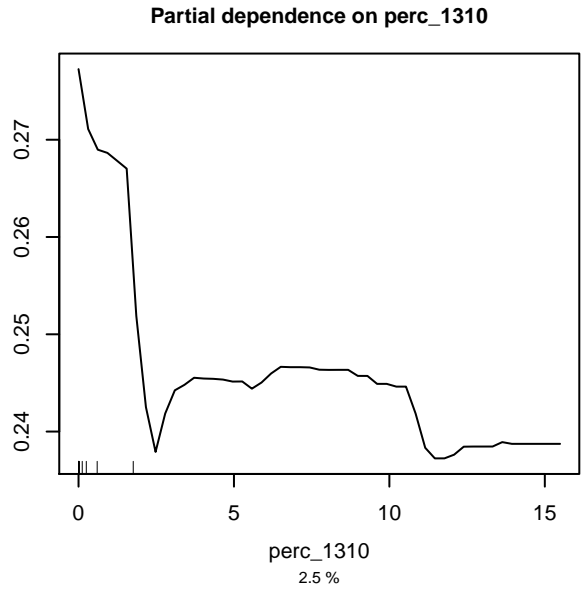
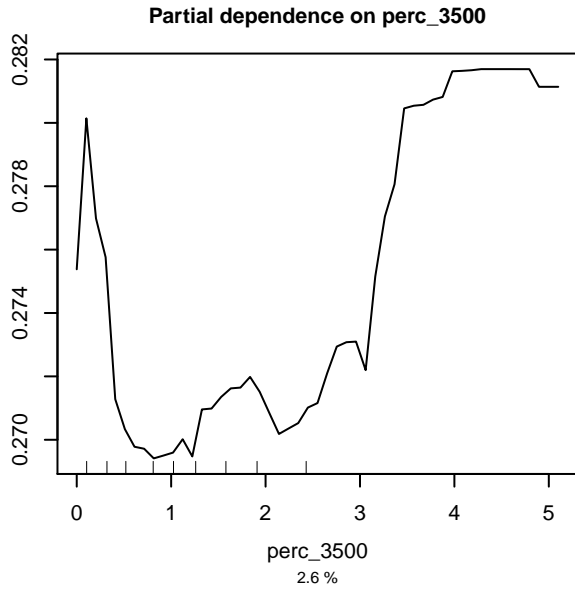


Partial dependence on soil_sand

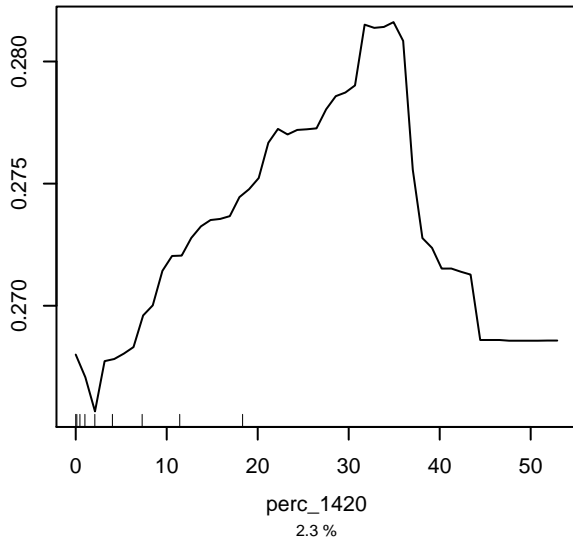


Partial dependence on perc_51

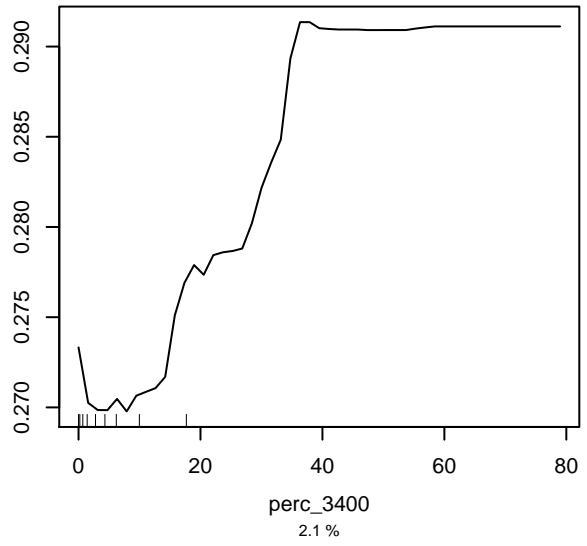




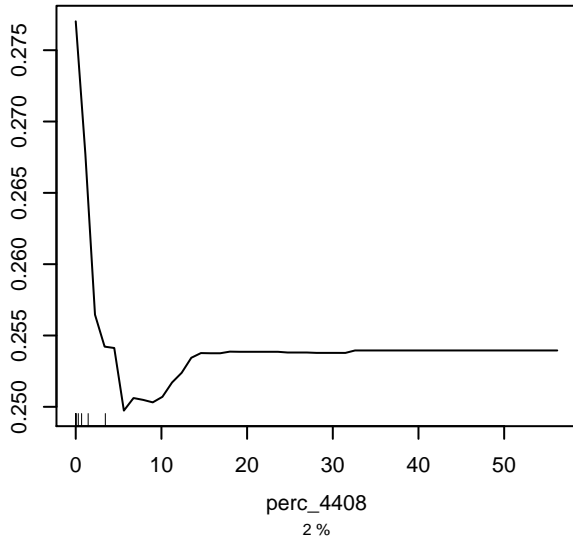
Partial dependence on perc_1420



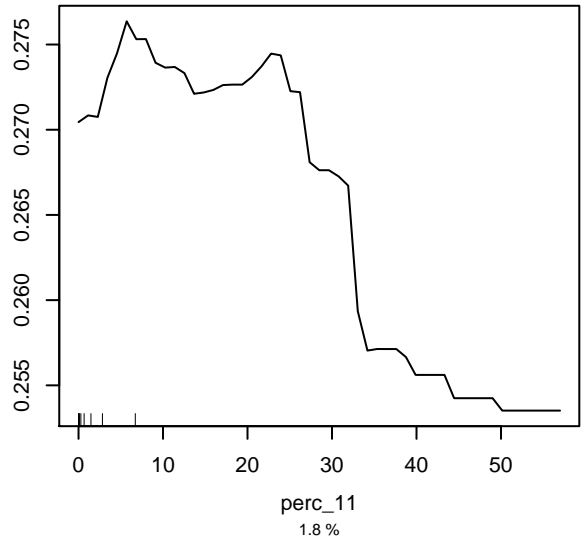
Partial dependence on perc_3400



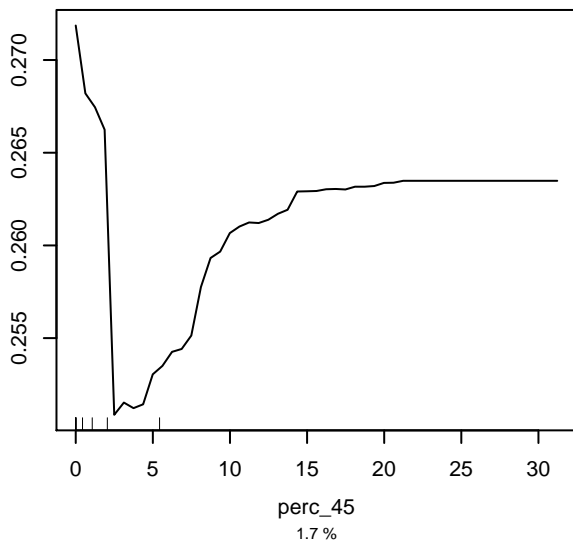
Partial dependence on perc_4408



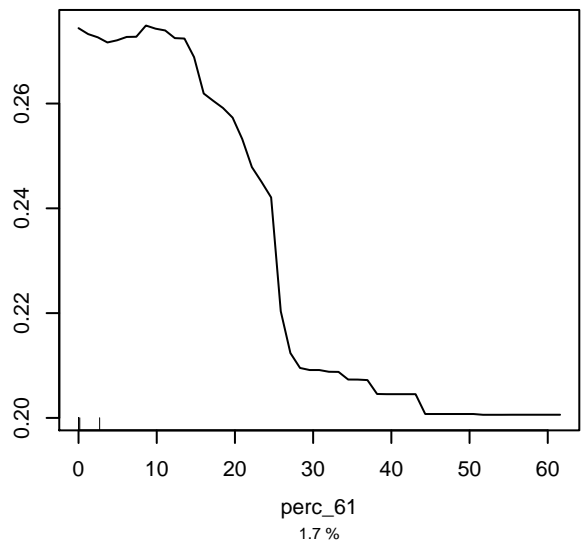
Partial dependence on perc_11



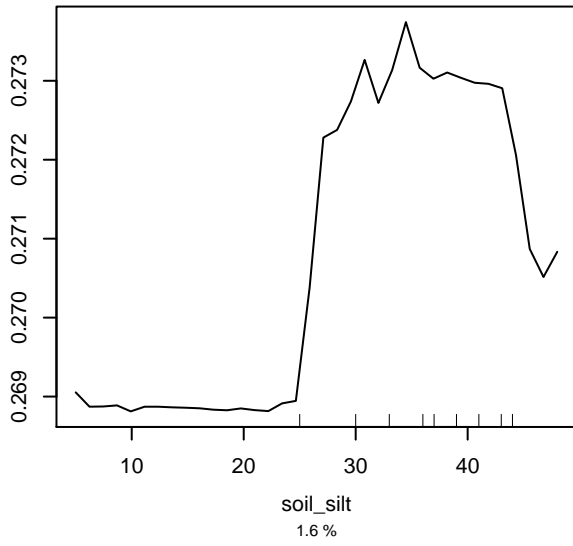
Partial dependence on perc_45



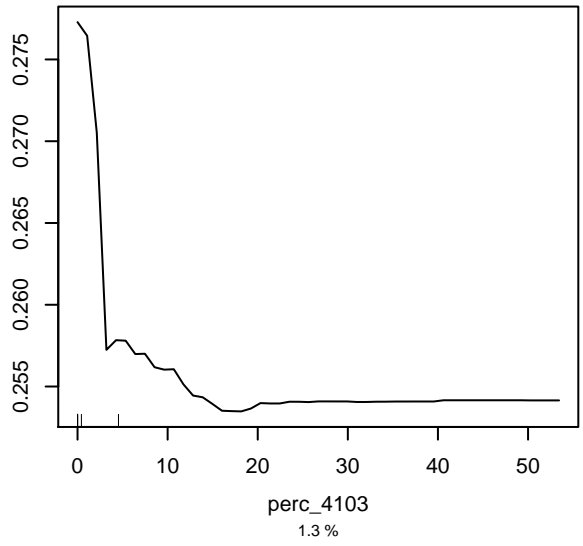
Partial dependence on perc_61



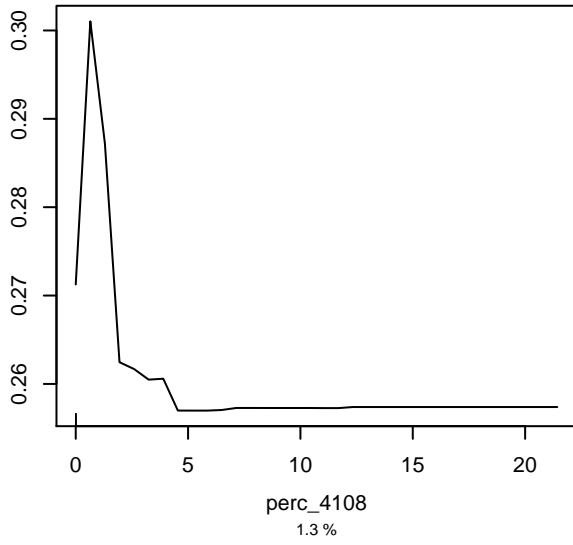
Partial dependence on soil_silt



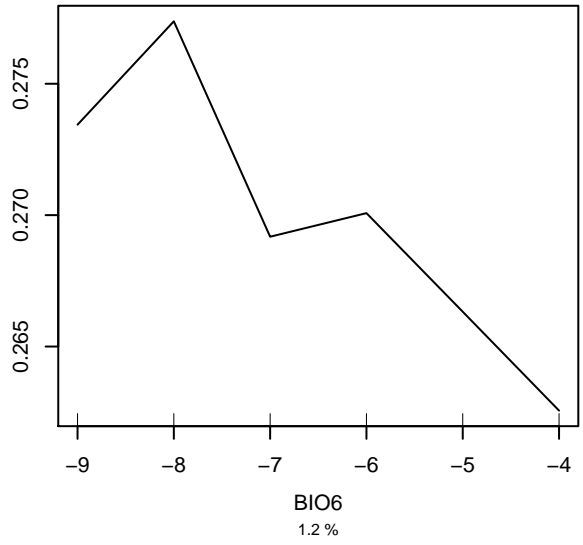
Partial dependence on perc_4103



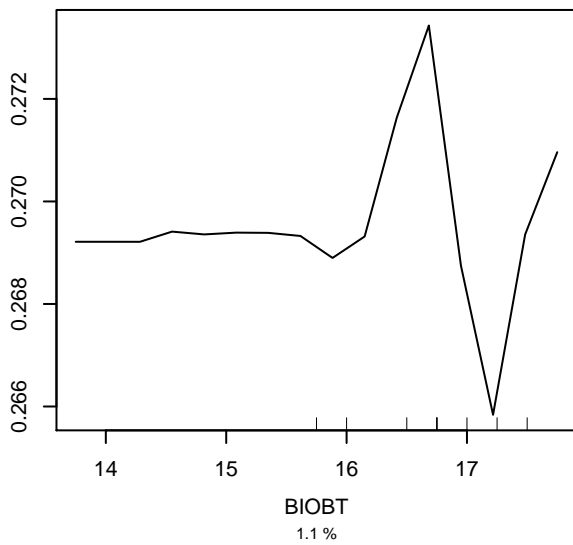
Partial dependence on perc_4108



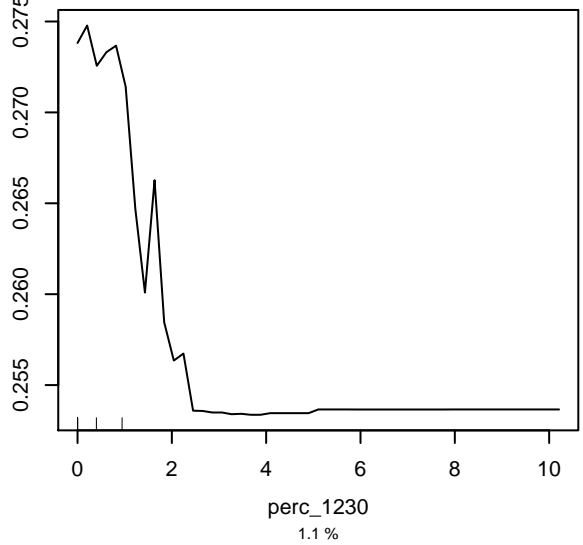
Partial dependence on BIO6

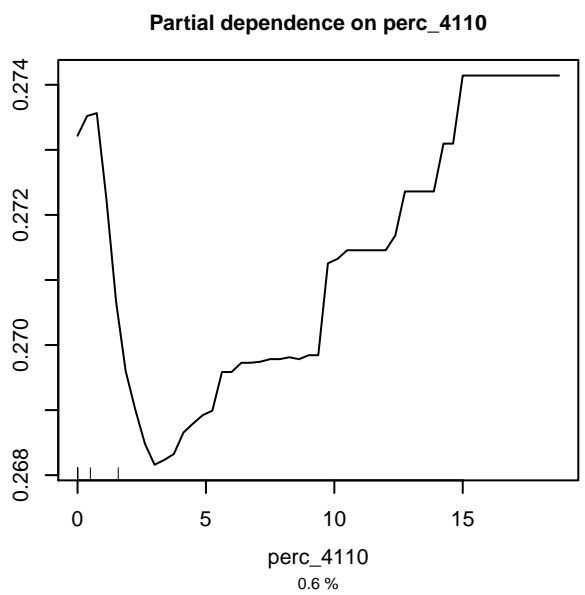
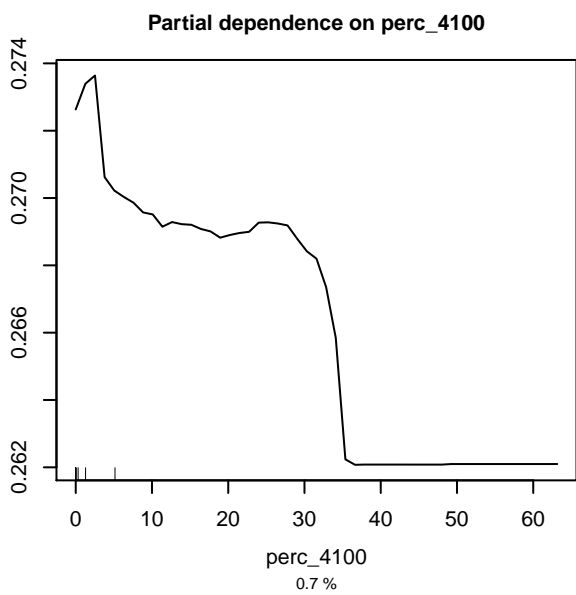
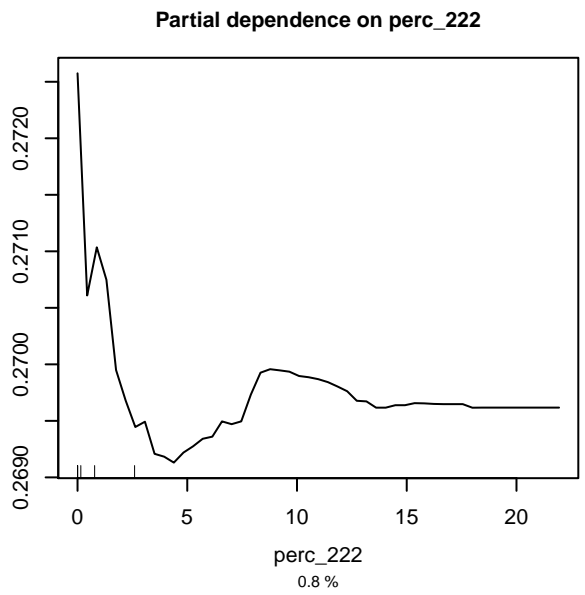
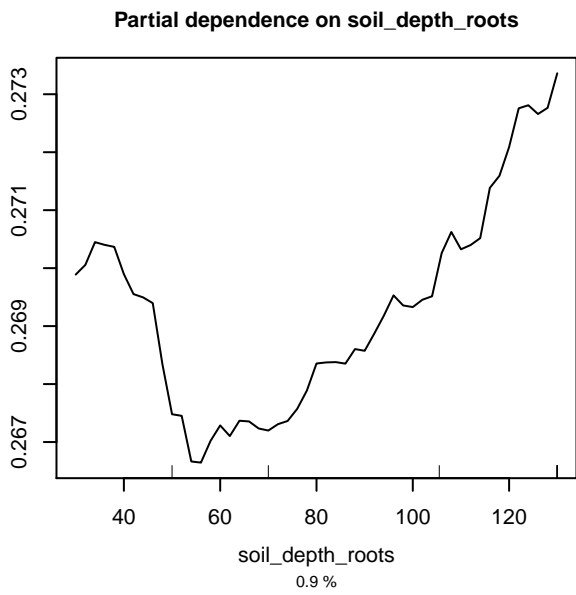
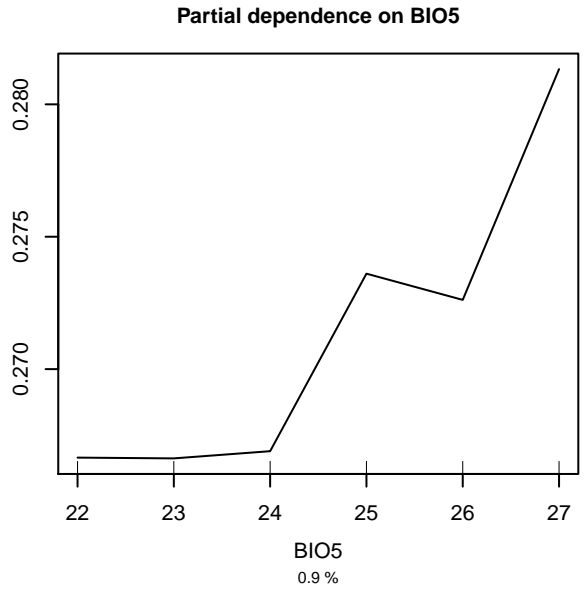
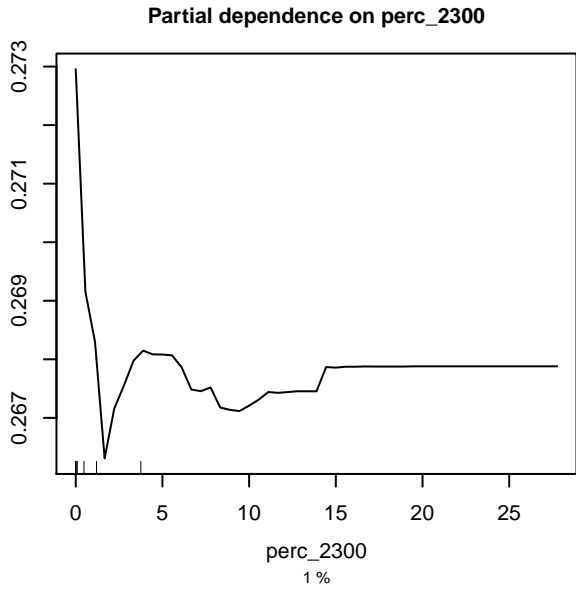


Partial dependence on BIOBT

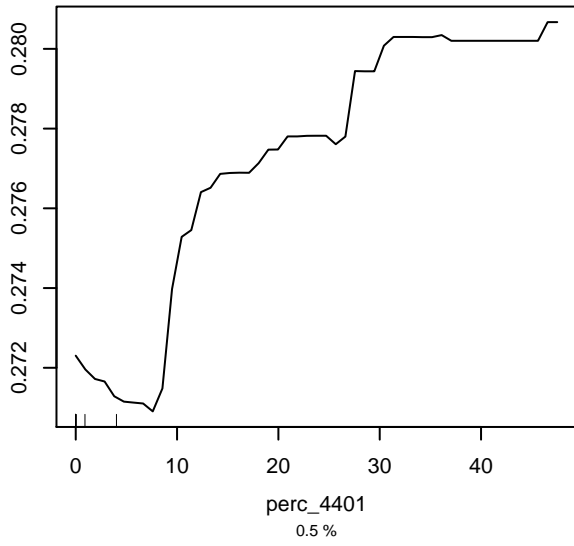


Partial dependence on perc_1230

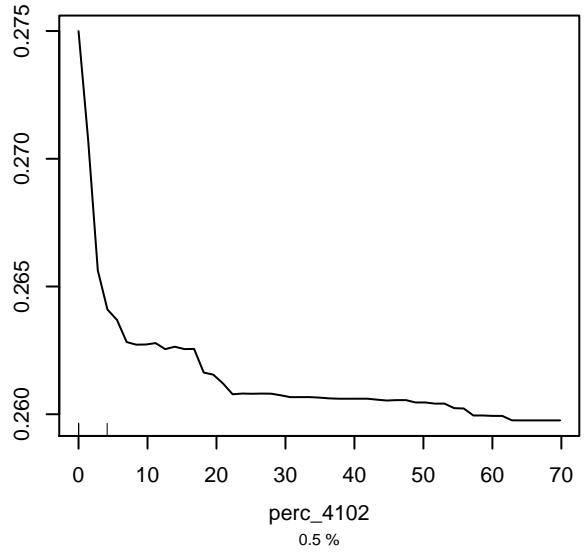




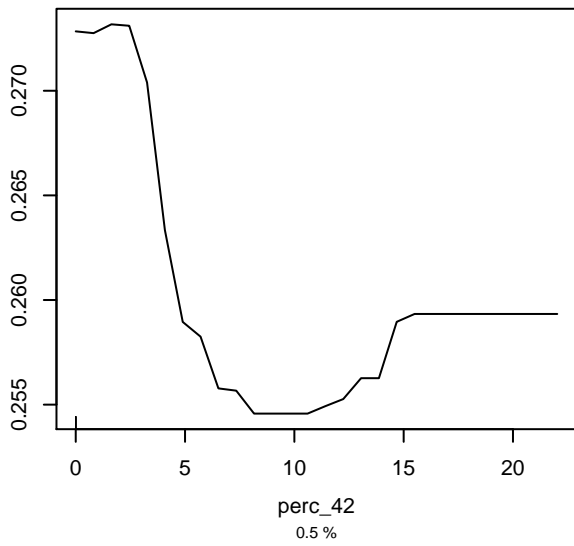
Partial dependence on perc_4401



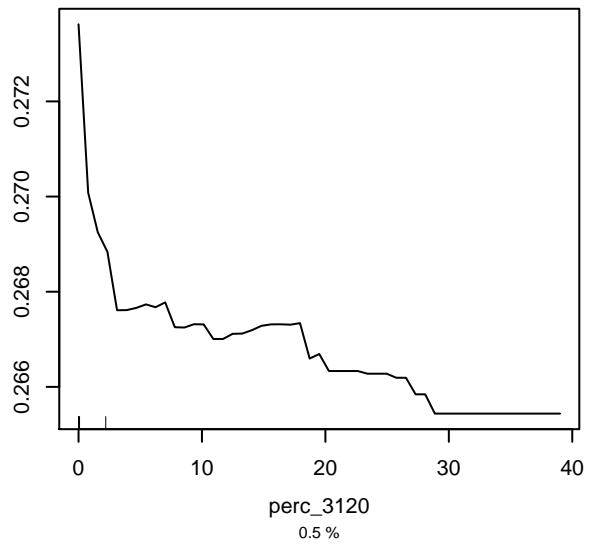
Partial dependence on perc_4102



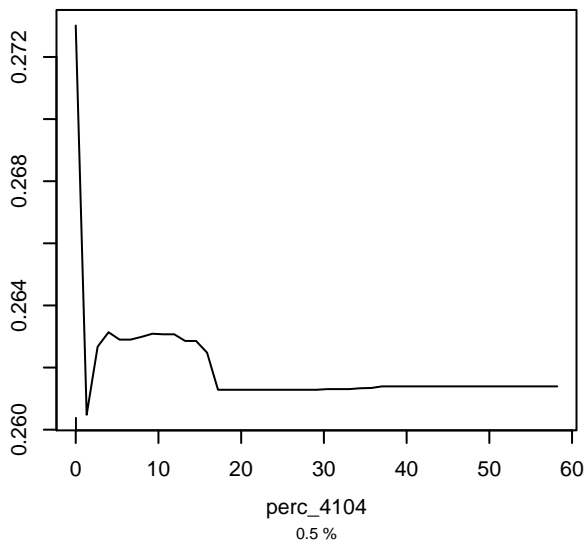
Partial dependence on perc_42



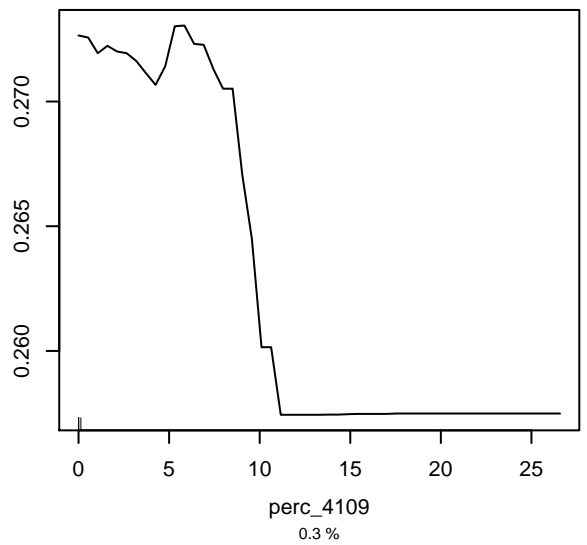
Partial dependence on perc_3120

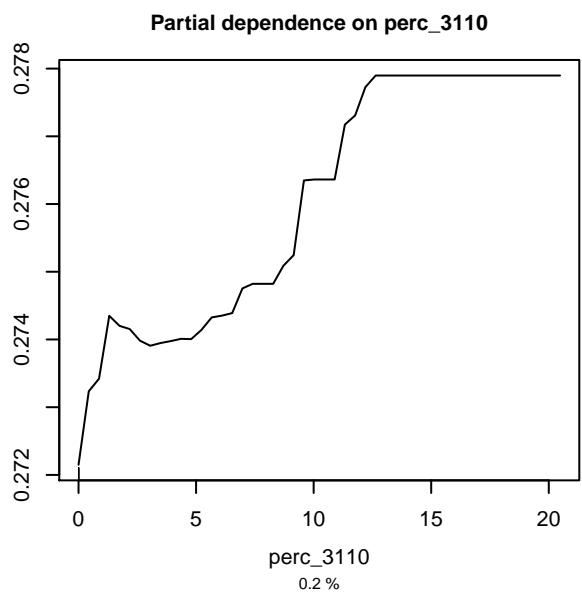
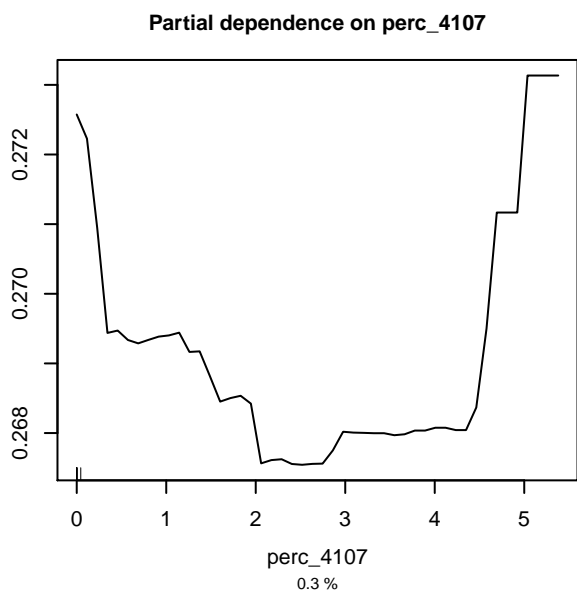
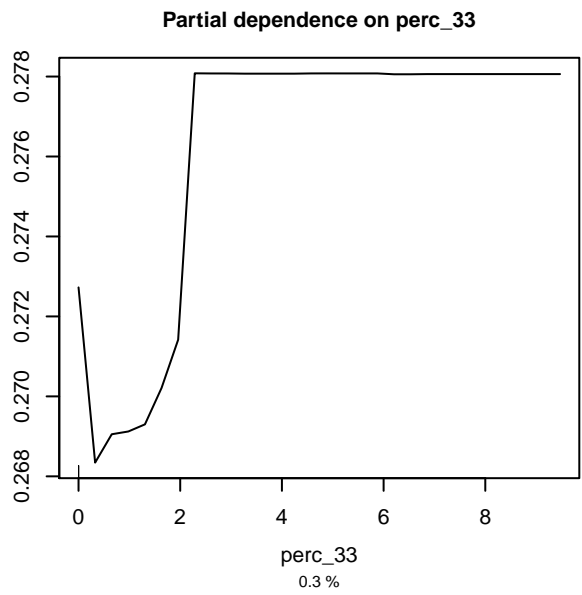
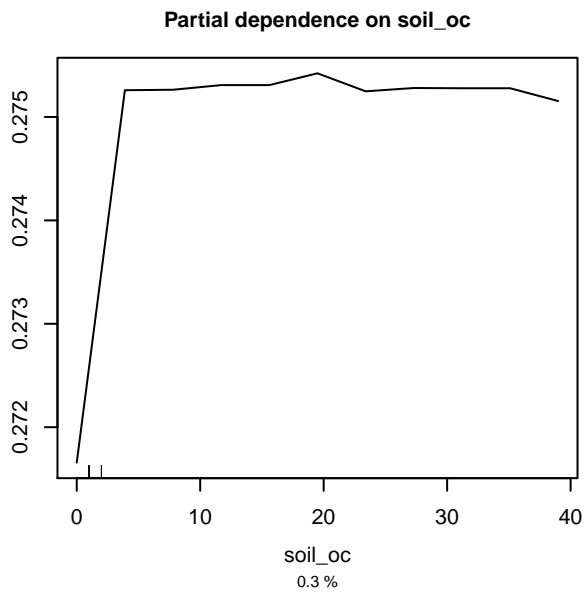
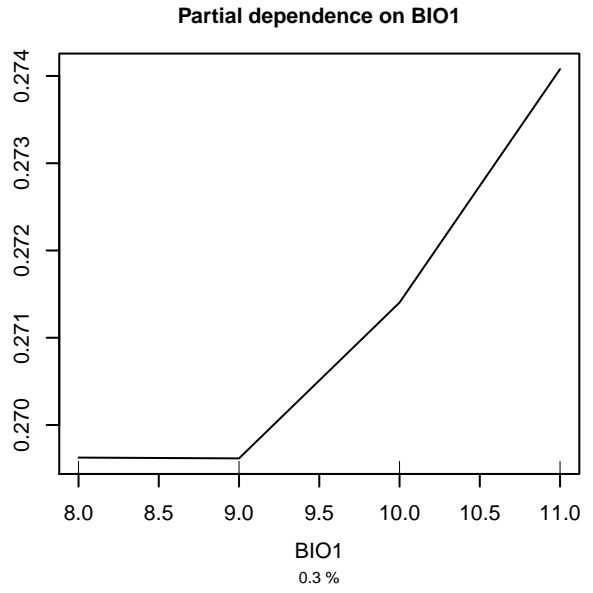
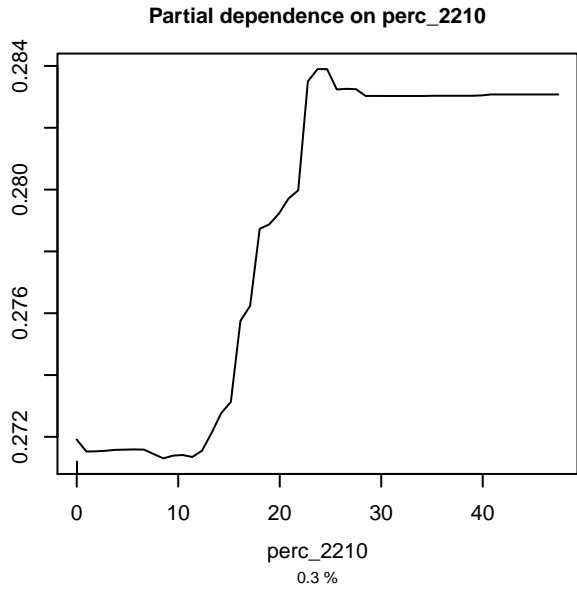


Partial dependence on perc_4104

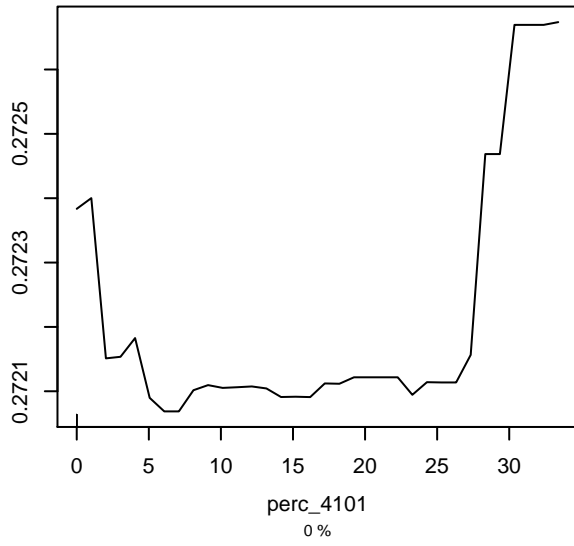


Partial dependence on perc_4109

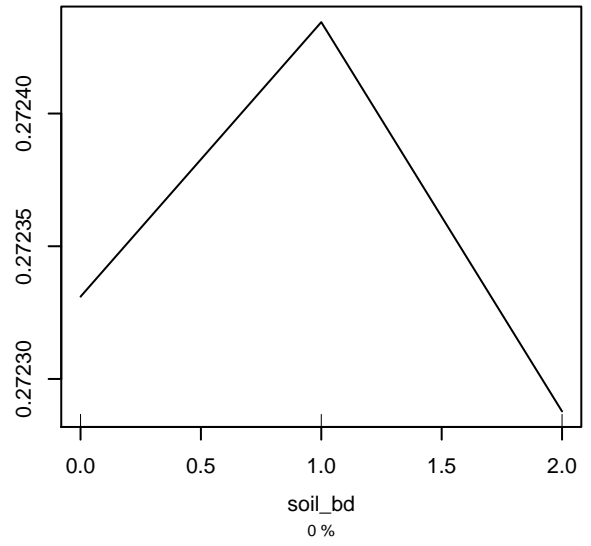




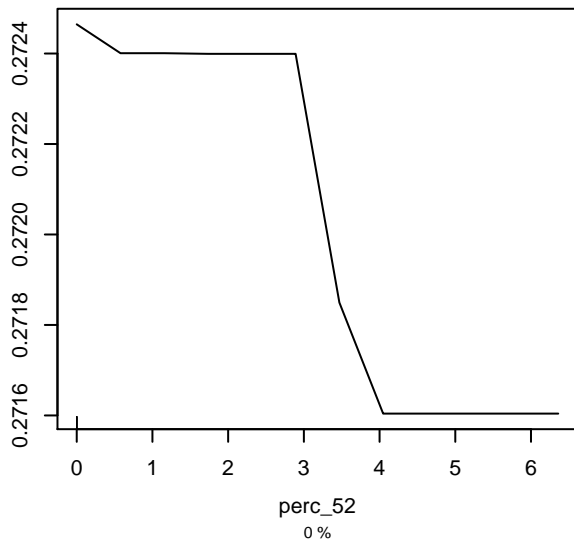
Partial dependence on perc_4101



Partial dependence on soil_bd



Partial dependence on perc_52



Partial dependence on perc_4105

